



# Hello!



## H66 KID'S SMART WATCH User Manual

Dear AWEI User,  
Thank you for choosing AWEI product. Your choice is crucial for us, which means AWEI has added a new user. Hope that we will bring you a good experience through our products and services. Also hope you will put forward the good advice and suggestions by official customer hotline, Weibo and Wechat in the process of product experience, which can help AWEI to constantly improve product and service.

If you encounter any problems in the using product, please refer to service process. Your support is our strongest power, also your recognition and evaluation are a great encouragement to AWEI. Thank you!

AWEI sales team

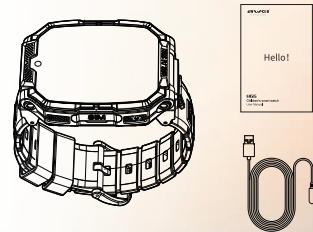
1

## Introduction

Thank you for purchasing the model AWEI H66 Children's 4G talk smart watch. Please read this manual before use.

## Accessories List

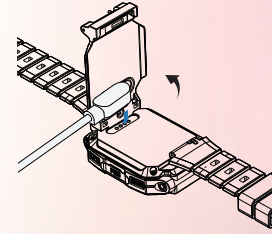
- 1X smart watch
- 1X USB magnetic charging cable
- 1X instruction manual



2

## Charging

Before using the watch for the first time, you need to charge and activate it;  
The watch uses a magnetic charging interface. After connecting the magnetic cable, turn on the power.  
After full charging, please turn off the power or unplug the magnetic cable.



## SIM card installation

SIM card size: Nano SIM card (please turn off the watch before installing the Nano card)  
Card insertion direction: insert the card into the machine according to the card insertion prompt  
Package requirements: activate caller ID, activate GPRS Internet access function (the watch supports 4G traffic)

3

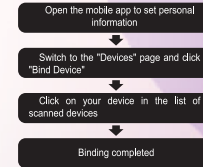
## Connect the watch

Watch app download  
Scan the QR code below to download and install the watch app.



SETRACKER2

Scan the code to download the mobile app

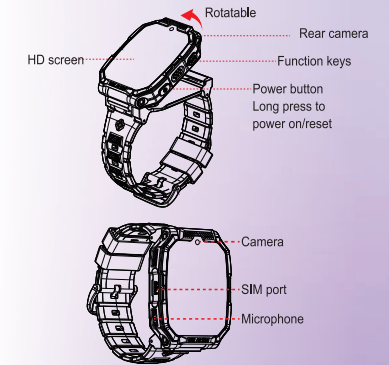


**APP download:** APP download: Use your mobile phone to scan the QR code on the right or go to the APP Store, App Store to download and install SeTracker or SeTracker2  
**APP login:** APP login: In the login interface, find the registration option, use the email address to register an account, and then enter the registered account and password to log in to the APP

4

## How To Use

### Watch operation guide



- If the watch cannot be turned on and displayed due to battery dormancy, you can press and hold the power button for 20 seconds to reset it. After resetting, please charge for 30 minutes before turning it on.
- After installing the card, please seal the card cover completely. If it is not completely sealed, there may be a risk of water ingress.

5

## How To Use

### Charging and turning on

- Please charge the product for more than two hours before use.
- After fully charged, press and hold the power button for 3 seconds to power on. After the card is installed, it can be shut down in the watch settings.
- Please use the special charging cable that comes with the package for charging. Please dry the charging port before charging. The charging time should not exceed 4 hours.
- Please do not use the power adapter with output over 5V 1A to charge, otherwise it may burn out the circuit and cause no charging.

### Bind watch

- Open the APP and bind the watch in the Add Device function. Please install the SIM card first and connect the watch to the network for 3 minutes before the registration code appears. Find the registration code in the watch interface and bind it. Please confirm whether the registration code is correct when binding.  
Note: After changing the SIM card, please rebind the registration code of the watch.
- After the binding is successful, the watch can locate and save the number after connecting to the network. Please turn on the notification permission of the APP to receive message notifications from the watch.

6

## How To Use

### Function Introduction

The watch supports full-screen touch, swipe up, swipe down, swipe left, swipe right, long press and other operations. You can swipe the screen to switch and view various functions; you can also click and long press the screen to perform related operations.  
The watch supports phone calls, micro chats, positioning, video calls, alarms and other functions.

Note: When managing the watch through the APP, all operations on the watch need to be pushed to the watch through the network. Due to the network conditions, there may be delays sometimes. The length of time it takes to receive the watch depends on the network conditions.

## Specifications

Screen size: 1.83-inch TFT	System Requirements
Battery capacity: 800mAh	Android : ≥5.0 version
Working time :2-3 Days	IOS : >9.0 version
Waterproof rating: IP65	HarmonyOS : >4.0 version



**Note:**  
The waterproof is only for non-underwater life scenarios. Swimming, diving, boating, sauna ect do not meet the warranty terms.

7

## Frequently asked questions

- Why does the watch always show off-line status?  
Answer: 1. Please check whether the SIM card is installed correctly, whether the network signal in the status bar is normal, whether there is any arrears, and whether data traffic is activated.
- The watch will disconnect from the network when the network environment is poor, and the watch will reconnect to the server after a few minutes.
- Use the mobile phone to edit the text message pw,123456,ts# and send it to the phone card number of the watch. You can inform your dealer of the text message content replied by the watch to check whether the parameters are correct.
- Can other family members bind the watch?  
Answer: Yes, please register an account first and then bind the watch. A maximum of 10 accounts are allowed to bind the watch. The deputy administrator needs to contact the main administrator for authorization.
- The watch cannot be charged?  
Answer: 1. The battery is too low. Please charge for at least 30 minutes.
2. Replace the charger and try to charge again.
3. Is there any dirt or rust at the charging place? Please clean it first. The USB interface and the charging head must be fully in contact for successful charging.

- Do not expose the watch to places with high moisture, high or low temperature for a long time.
- It can resist dust conditions such as living rooms, offices, laboratories, light industrial studios, storage rooms, etc., but is not suitable for special dusty environments.
- If the watch freezes and restarts, press and hold the power button for 20 seconds to reset the watch. After resetting, please charge it for 30 minutes before turning it on.

8

## Safety And Maintenance

Please read suggests below in order to help prolong the product lifespan and clearly understand the warranty clauses.

- Keep the product dry, do not put it in humid circumstance to avoid short circuit.
- Do not expose it to the sun or high heat. High heating will short lifespan of electronic components, damage battery and deform some plastic parts.
- Do not put it in cold circumstance to avoid damage to PCB board.
- Do not attempt to take apart the product, especially non-professionals.
- Do not fall, vibrate strongly, strike with hard objects, to avoid damage to inner electronic circuit.
- Do not use high chemical products, detergent to clean the item.
- Do not scratch the surface with sharp items to avert damaging the case and appearance.
- Do not make it charging 10 hours continuously for the sake of lifespan.

If the product can not work properly, please send it to AWEI authorized maintenance agents. Our staff will help to solve the problems for you.

**Statement: In order to improve product performance we will upgrade products, the content may change without notice, pls forgive! Thank you for your purchase.**

9

Supervised by H.K. Yale International Co., Ltd  
Produced by Shenzhen Yale Electronics Co., Ltd  
Factory Add: 4th Floor, Building 2, Yujingtai Industrial Park, Huaxing Road, Longhua District, Shenzhen, China.

Customer service hotline/ Fax:  
Hotline: 400-998-3899  
Cooperation mailbox: yale@awei.hk  
After-sales service: service@awei.hk

For more information please visit:  
www.awei.hk



AWEI WeChat

Contact:  
twitter : <https://www.twitter.com/Aweiglobal>  
facebook : <https://www.facebook.com/aweiproducts>  
instagram : [https://www.instagram.com/awei\\_official](https://www.instagram.com/awei_official)

10

## AWEI Warranty Card (please fill this carefully)

Model No.		Barcode	
User Name		TEL	
Address			
Seller		Seller Tel	
Seller Add			
Date of purchase		Date for Maintenance	
Damage situation		Maintenance time	
Remark			